

INSTALLATION INSTRUCTION

Instruction: 7495779

Product: BOBCAT EXCAVATOR

Subject: CI COUPLER KIT

Kit Number	7495776, 7495777, 7495778
MODEL	KIT NUMBER
E26	7495776
E32	7495776
E32e	7495776
E35	7495776
E42	7495777
E45	7495777
E50	7495777
E55	7495777
E60	7495777
E85	7495778
E88	7495778

ESTIMATED INSTALLATION TIME: 1 hour*

*** Approximate time only; actual time may vary.**

Kit Explanation

This installation instruction will explain how to safely and correctly install the CI Coupler Kit.

Read this instruction completely to become familiar with the procedures before beginning the installation.

To avoid duplication, instructions may refer you to the Operation & Maintenance Manual.

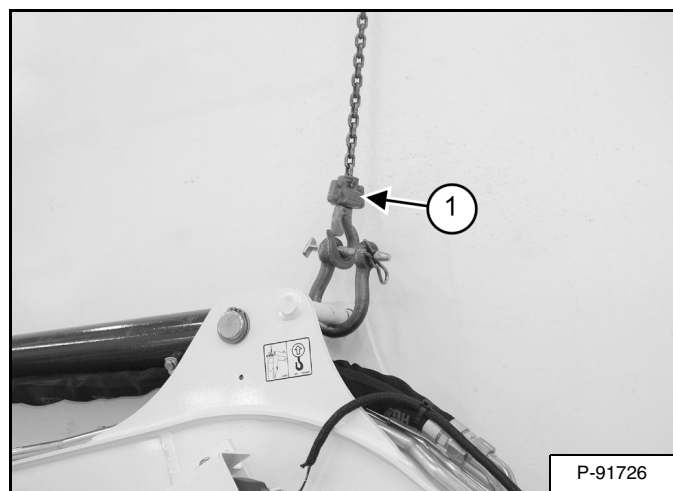
Remove the bucket or attachment. (See Machine Operation & Maintenance Manual for the correct procedure.)

Place the excavator on a flat level surface. Lower the blade to the ground.

Lower the boom to a height of approximately 305 mm (12 in).

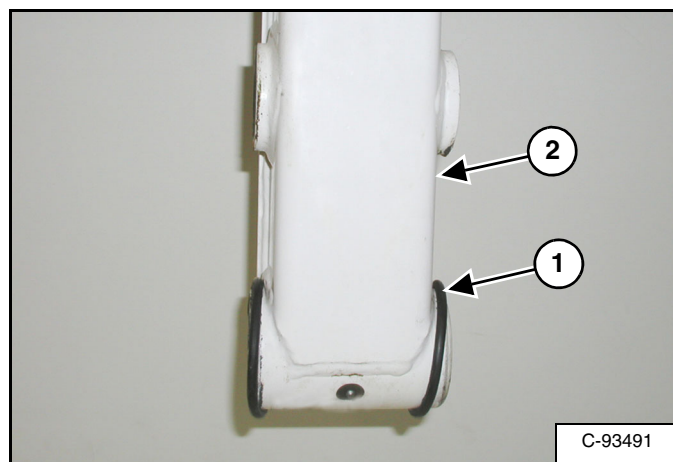
Stop the engine.

Figure 1



Support the boom with a hoist (Item 1) [Figure 1].

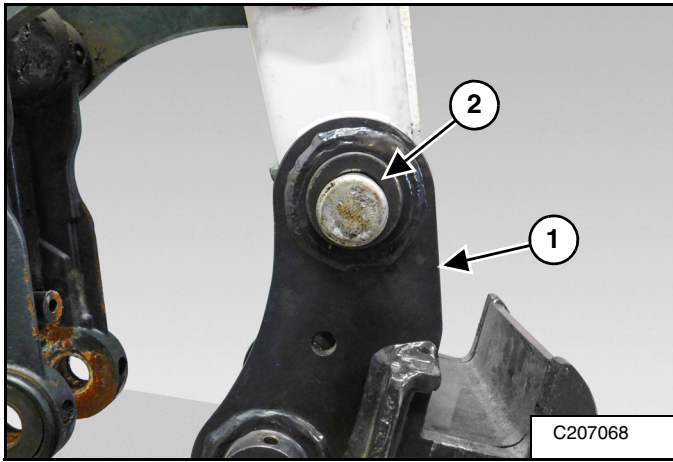
Figure 2



Make sure the O-rings (Item 1) are installed on the arm (Item 2) [Figure 2].

NOTE: O-rings (Item 1) are supplied with the machine. If no O-rings are present, contact your machine dealer or manufacturer.

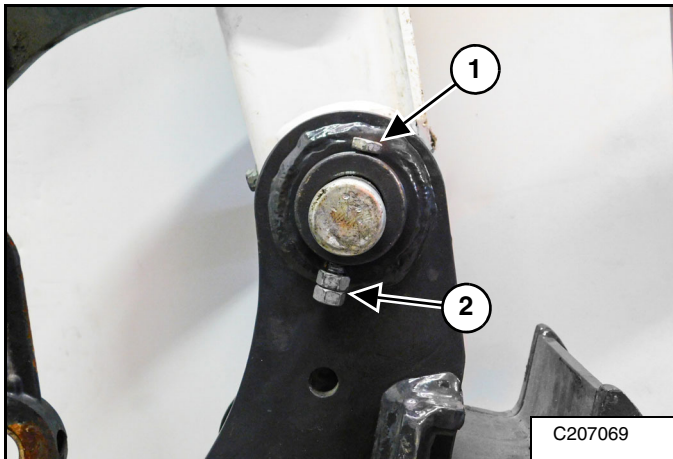
Figure 3



Install the coupler (Item 1) and the pin (Item 2) **[Figure 3]** on the arm.

NOTE: Pin (Item 2) is supplied with the machine. If no pin is present, contact your machine dealer or manufacturer.

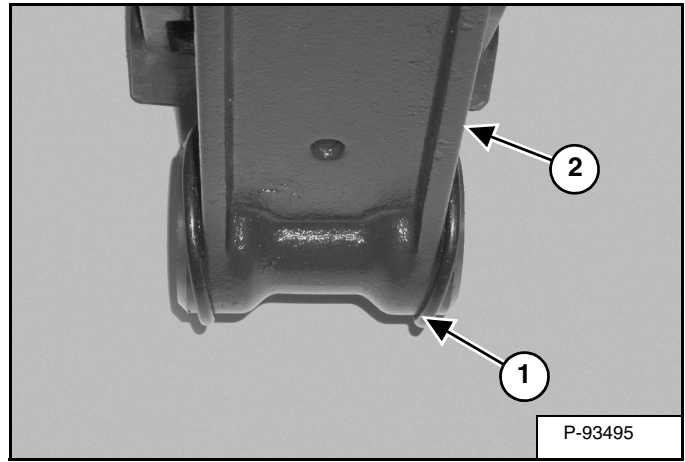
Figure 4



Install the bolt (Item 1) and nuts (Item 2) **[Figure 4]**. Bolt and nuts are supplied with the machine.

The two nuts (Item 2) are used as jam nuts to hold the bolt (Item 1) without tightening the bolt to the pin boss. After the nuts (Item 2) are tightened together, the bolt (Item 1) **[Figure 4]** should be free to spin.

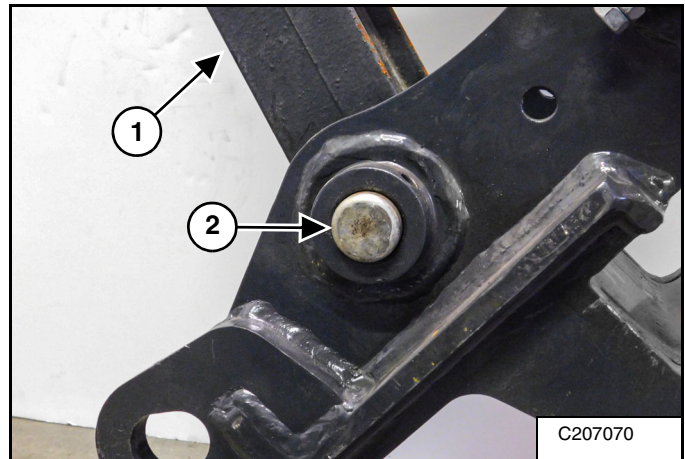
Figure 5



Make sure the O-rings (Item 1) are installed on the link (Item 2) **[Figure 5]**.

NOTE: O-rings (Item 1) are supplied with the machine. If no O-rings are present, contact your machine dealer or manufacturer.

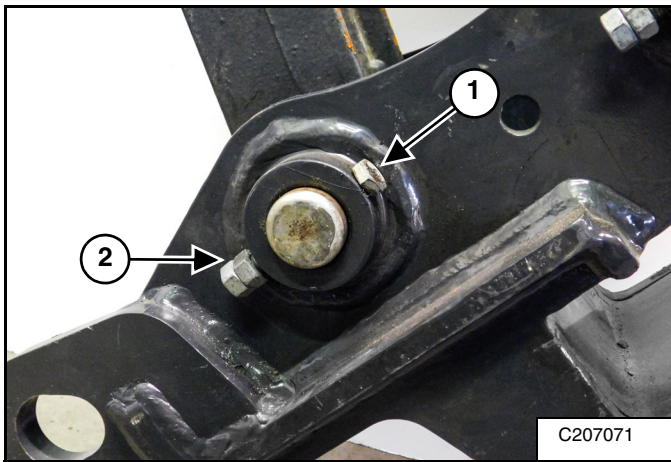
Figure 6



Install the link (Item 1) and pin (Item 2) **[Figure 6]** on the coupler.

NOTE: Pin (Item 2) is supplied with the machine. If no pin is present, contact your machine dealer or manufacturer.

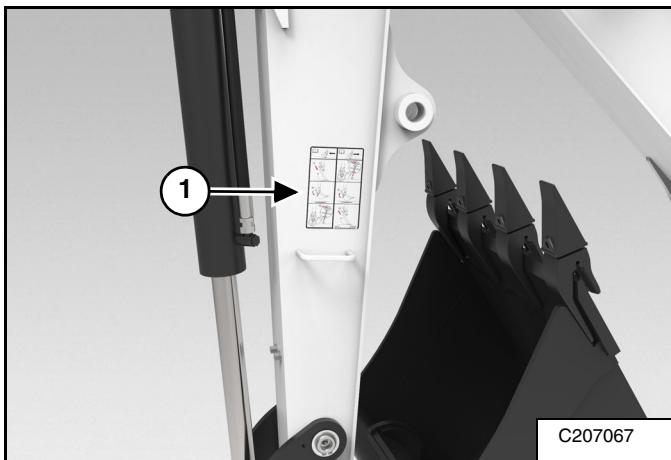
Figure 7



Install the bolt (Item 1) and nuts (Item 2) [Figure 7]. Bolts and nuts are supplied with the machine.

The two nuts (Item 2) are used as jam nuts to hold the bolt (Item 1) without tightening the bolt to the pin boss. After the nuts (Item 2) are tightened together, the bolt (Item 1) [Figure 7] should be free to spin.

Figure 8



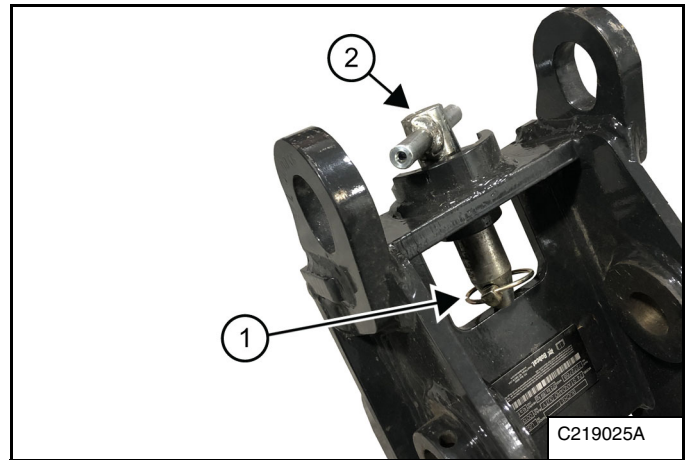
Wash the side of the arm with soapy water and dry.

Install the decal (Item 1) [Figure 8].

INSTALLING ATTACHMENTS (COMMON INDUSTRY INTERFACE)

Installation of the bucket is shown. The procedure is the same for other attachments.

Figure 9



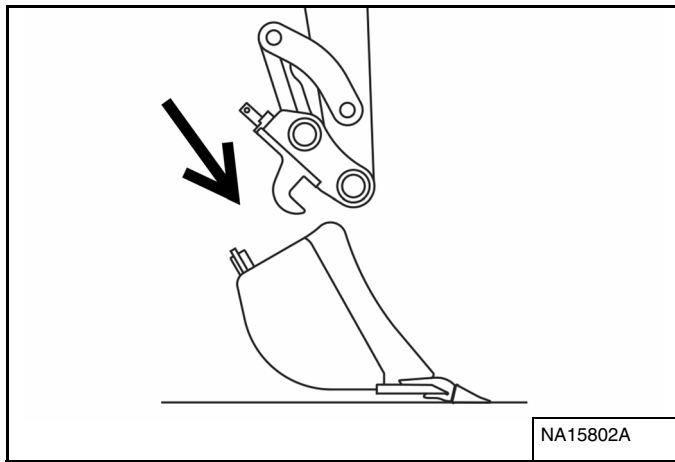
1. Unlatch the retaining pin (Item 1) and pull out the Common Industry Interface (CII) locking pin (Item 2) [Figure 9].
2. Start the engine.

WARNING

Use of unapproved attachments, implements and buckets can cause injury or death. Attachments, implements and buckets for safe loads of specified densities are approved for each model. Never use attachments, implements, or buckets which are not approved by Ignite Attachments.

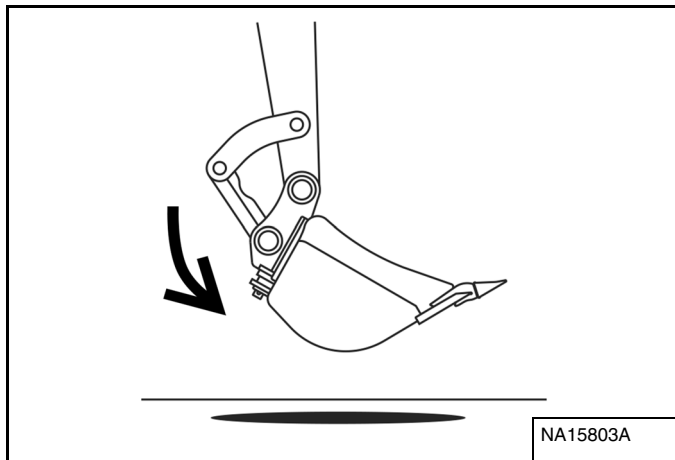
W-2709-IGA

Figure 10



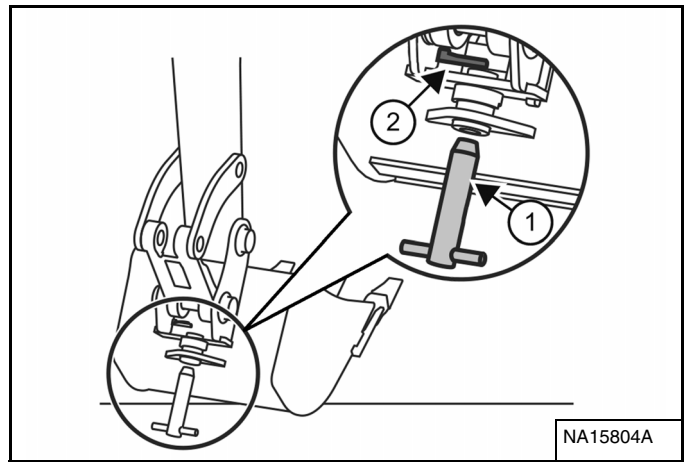
3. Move the arm and coupler toward the attachment **[Figure 10]**.
4. Fully retract the bucket cylinder.
5. Lower the CII onto the attachment.
6. Engage the coupler hooks onto the attachment tube.

Figure 11



7. Extend (curl in) the bucket cylinder and slightly raise the boom until the coupler contacts the back of the attachment mount **[Figure 11]**.
8. Engage the parking brake.
9. Stop the engine and exit the excavator.

Figure 12



10. Push the locking pin (Item 1) all the way into the coupler and latch with retaining pin (Item 2) **[Figure 12]**.



WARNING

Failure to secure the locking pin can allow the attachment to come off and cause serious injury or death.

The Common Industry Interface locking pin must extend all the way into the coupler and latch with the retaining pin.

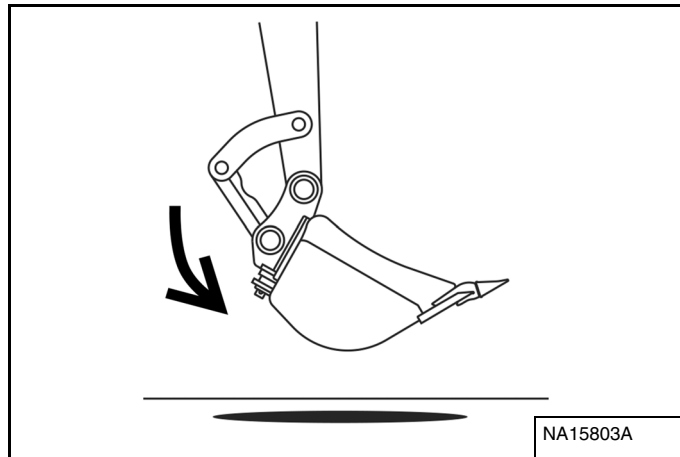
W-3093

REMOVING ATTACHMENTS (COMMON INDUSTRY INTERFACE)

Removal of the bucket is shown. The procedure is the same for other attachments.

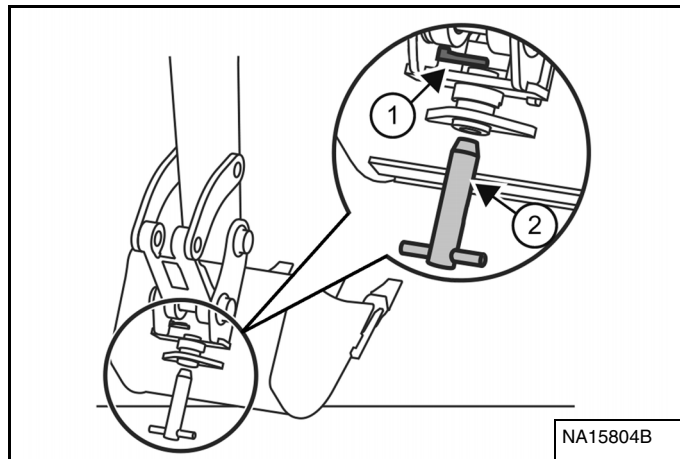
1. Park the excavator on a level surface.

Figure 13



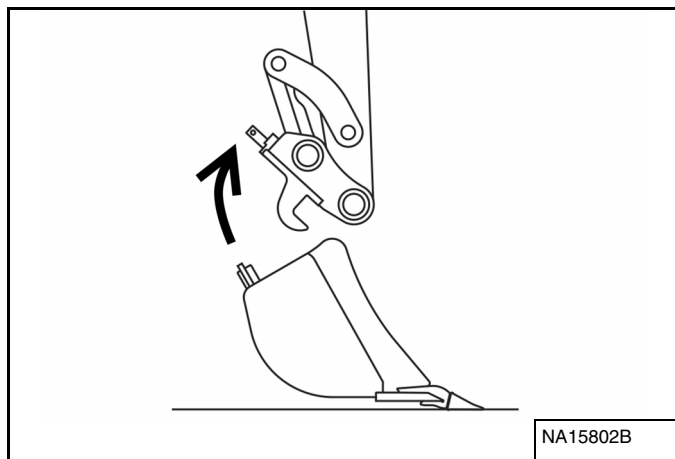
2. Raise the boom and extend the bucket cylinder until the attachment is slightly off the ground **[Figure 13]**.
3. Engage the parking brake.
4. Stop the engine and exit the excavator.

Figure 14



5. Unlatch the retaining pin (Item 1) and remove the locking pin (Item 2) **[Figure 14]**.
6. Enter the excavator, fasten the seat belt, and start the engine.
7. Lower the attachment until it is on the ground.

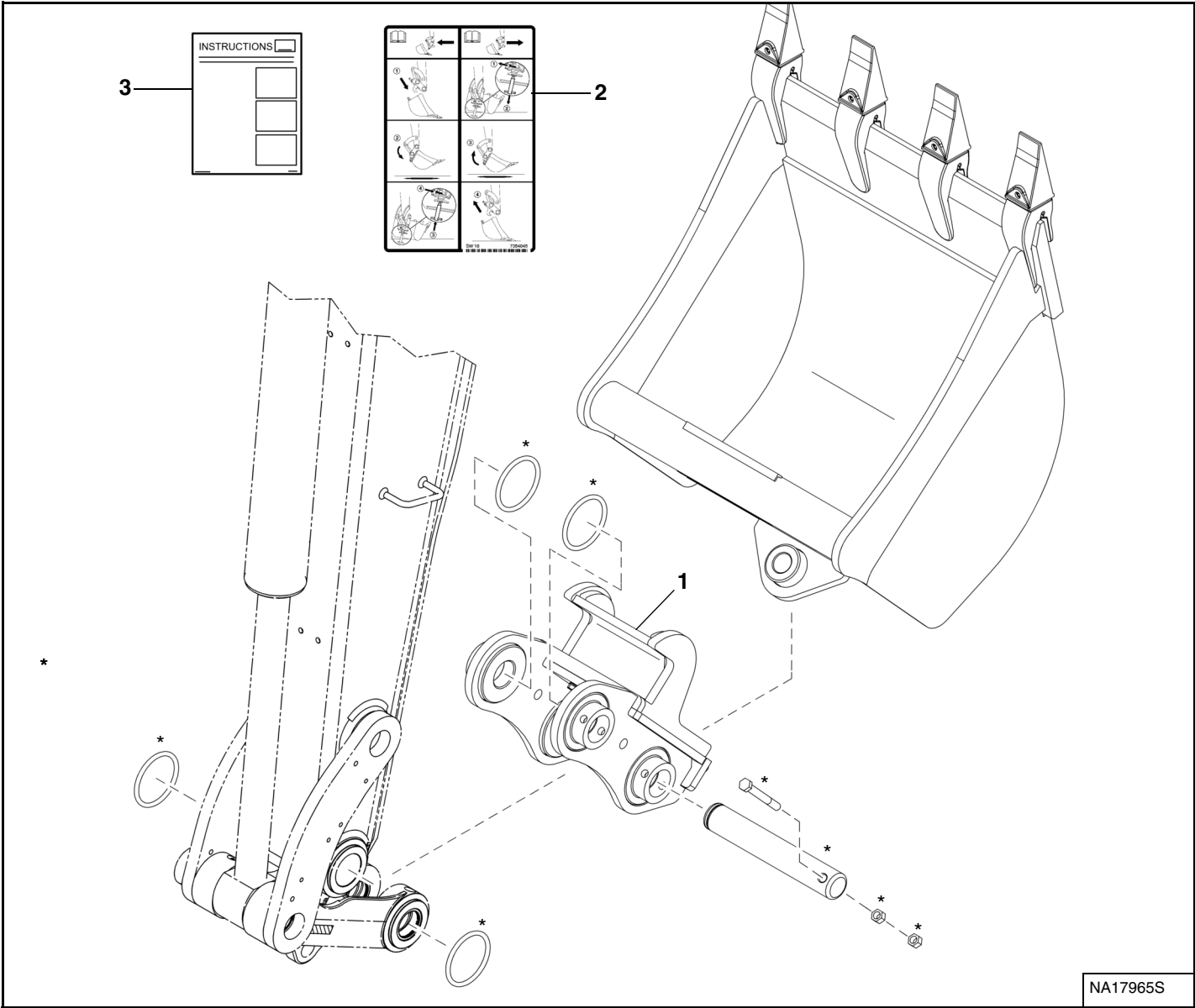
Figure 15



8. Retract the bucket cylinder to rotate the coupler out of the attachment mount **[Figure 15]**.
9. Move the arm out and raise the boom until the coupler is clear of the attachment.

CUSTOMER PACKING LIST

(Kit #7378221, #7378225, #7378229, #7378231, And #7378241) CI Coupler Kit



REF.	PART NO.	DESCRIPTION	KIT 7495776 QTY.	KIT 7495777 QTY.	KIT 7495778 QTY.
1	7343706	COUPLER	1	0	0
	7343717	COUPLER	0	1	0
	7343726	COUPLER	0	0	1
2	7354045	DECAL	1	1	1
3	7495779	INSTRUCTIONS	1	1	1
*Items not included in the kit. These items are supplied with your machine.					